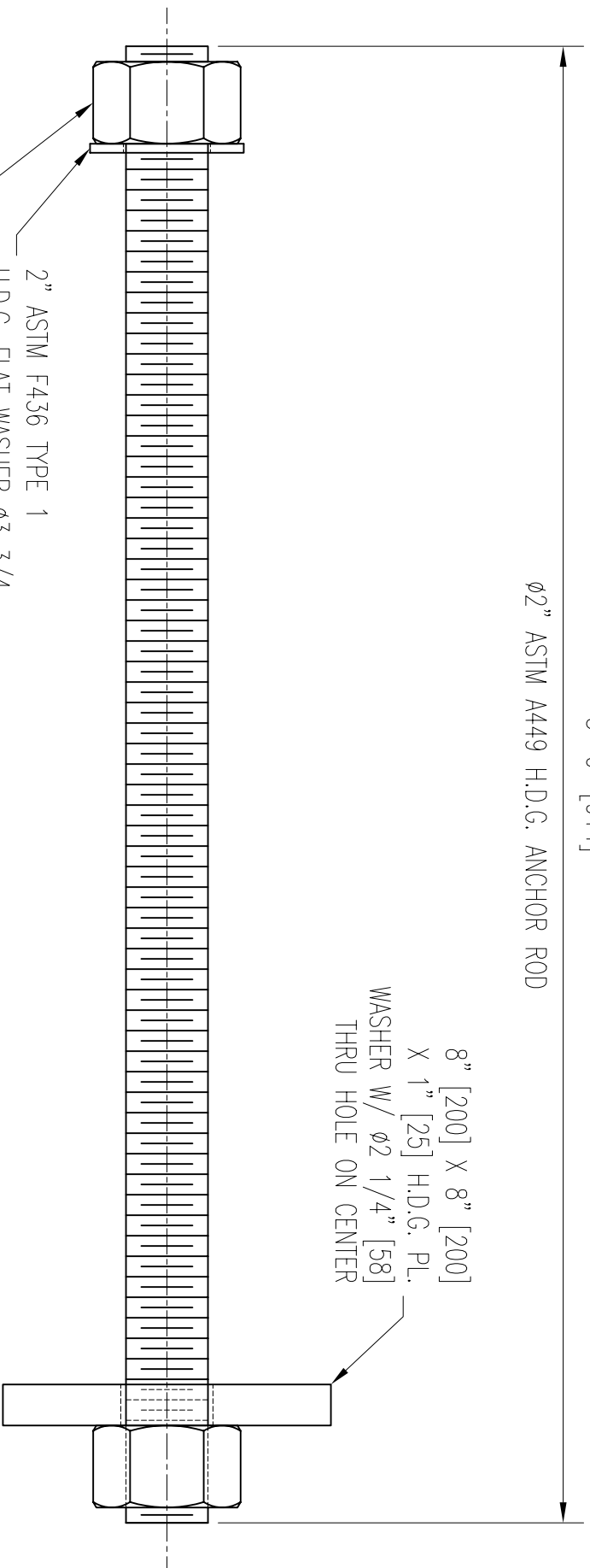


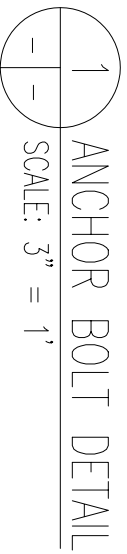
3'-0" [914]


Ø2" ASTM A449 H.D.G. ANCHOR ROD



- 2" ASTM F436 TYPE 1
H.D.G. FLAT WASHER Ø3 3/4
- 2" ASTM A563 GR. DH
H.D.G. HEAVY HEX NUT

8" [200] X 8" [200]
X 1" [25] H.D.G. PL.
WASHER W/ Ø2 1/4" [58]
THRU HOLE ON CENTER



PROJECT TITLE:		DRAWING TITLE:	
BOLLARD ANCHOR ROD		2" X 36" ANCHOR ROD HARDWARE	
APPROVED FOR CONSTRUCTION BY:		RELEASE OF THIS DRAWING TIES ALL OTHER REVISIONS, IF ANY, PREVIOUSLY RELEASED.	
DATE:	11/06/02	DATE:	11/06/02
SCALE:	3" = 1'	SCALE:	3" = 1'
THE DRAWING AND THE DESIGN IT REPRESENTS IS THE PROPERTY OF MARINE INTERNATIONAL. ANY USE OTHER THAN THAT WHICH IS EXPRESSLY AUTHORIZED BY MARINE INTERNATIONAL IS PROHIBITED. © COPYRIGHT 2002		REV. NO. 0	
PROJECT NO.:		DRAWING NO.:	
DWN BY: JEB		MARITIME INTERNATIONAL, INC.	
CHK BY: JEB			
INITIAL RELEASE		<p>0</p> <p>JEB</p>	
DESCRIPTION		<p>0</p> <p>JEB</p>	
REV. NO.		<p>0</p> <p>JEB</p>	